

Metal Tube Rotameter



New High-tech
Enterprise



CE

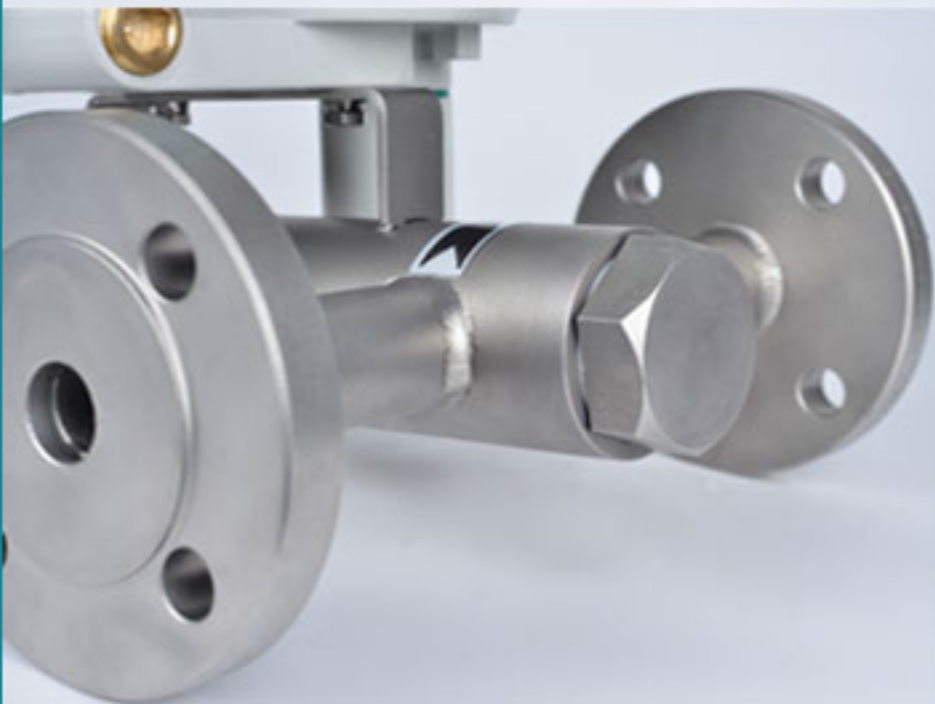
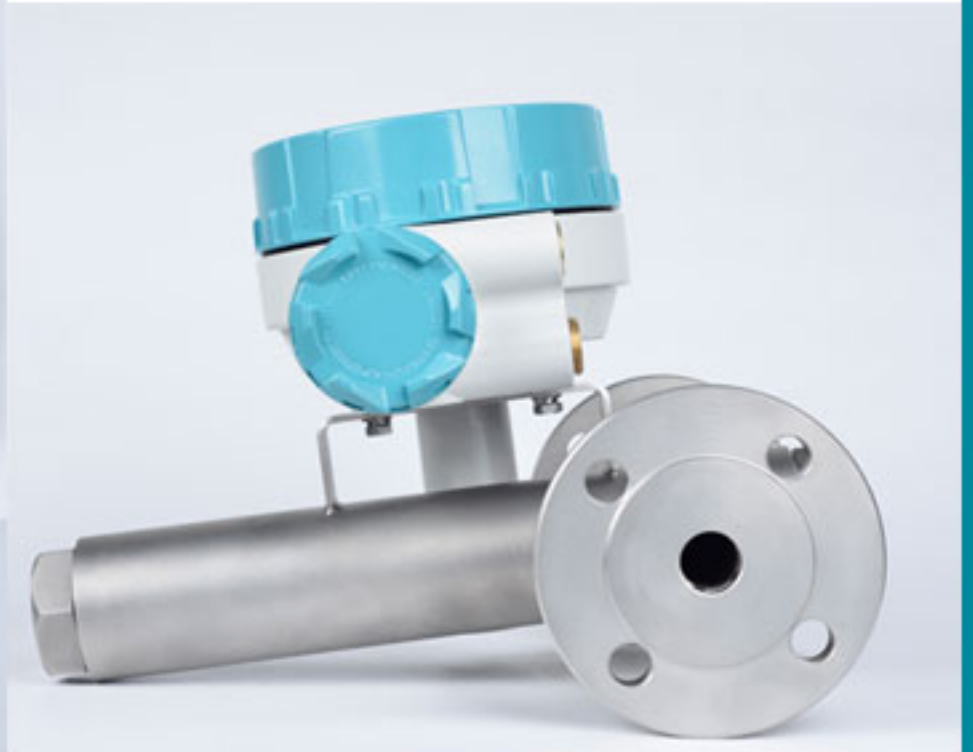


Ex-proof



ISO

Apply to complex and
harsh environments of
various industries



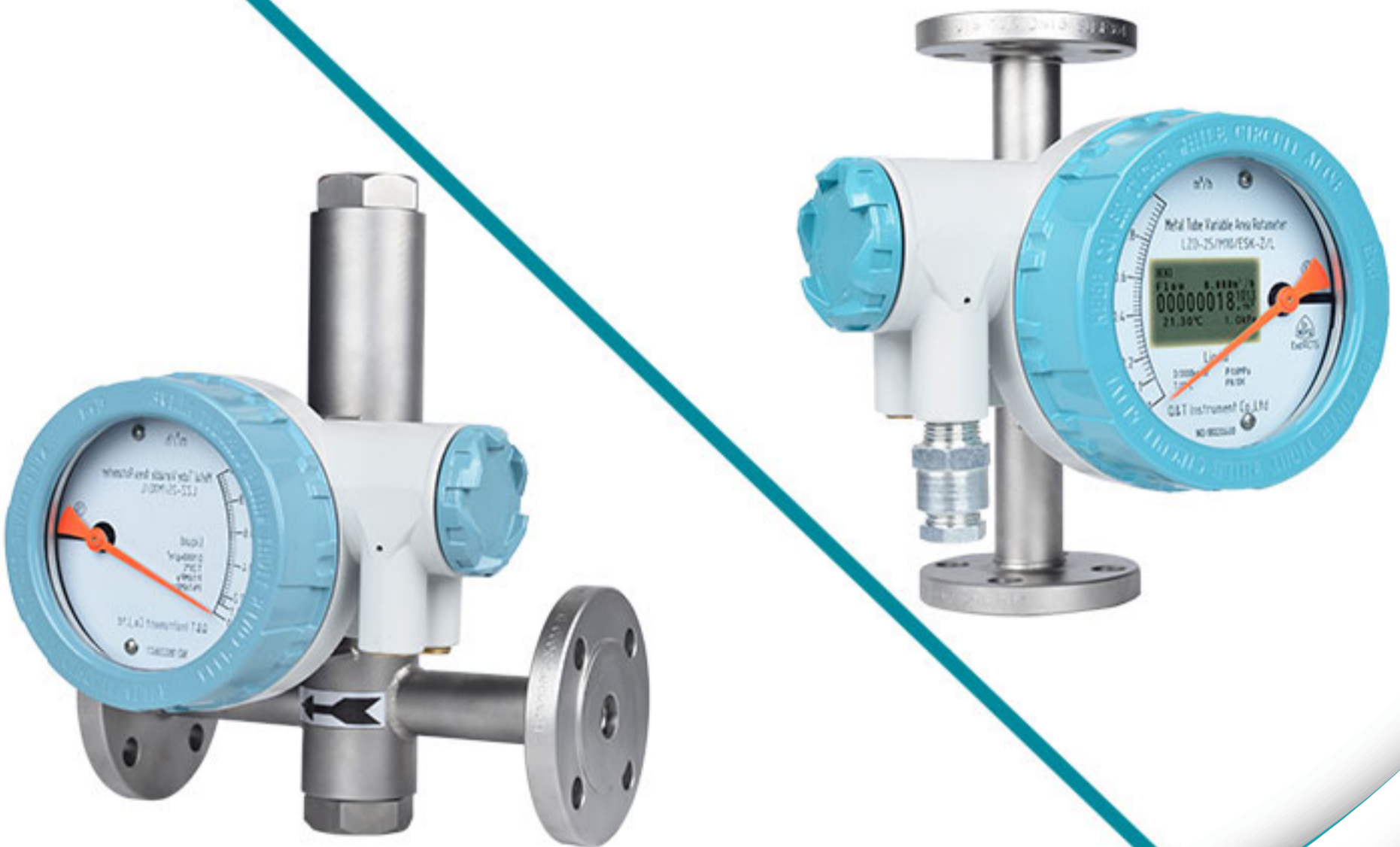
Special for low flowrate
(Liquid mini.16L/H, Gas
mini.0.5M³/H) and
various harsh mediums





Widely used for industries such as chemical, petroleum, pharmacy, food, paper making, sewage treatment, metallurgy, etc.

Model#:QTLZD



Model#:QTLZZ

DETAILS

All metal structure design
Suitable for high pressure
(Maxi.25Mpa), high temper-
ature(Maxi.300°C) or
strong corrosive mediums

Optional materials for
measuring parts.
Stainless steel, Titanium,
Hastelloy, PTFE, FEP, etc.



Variety Display ◀

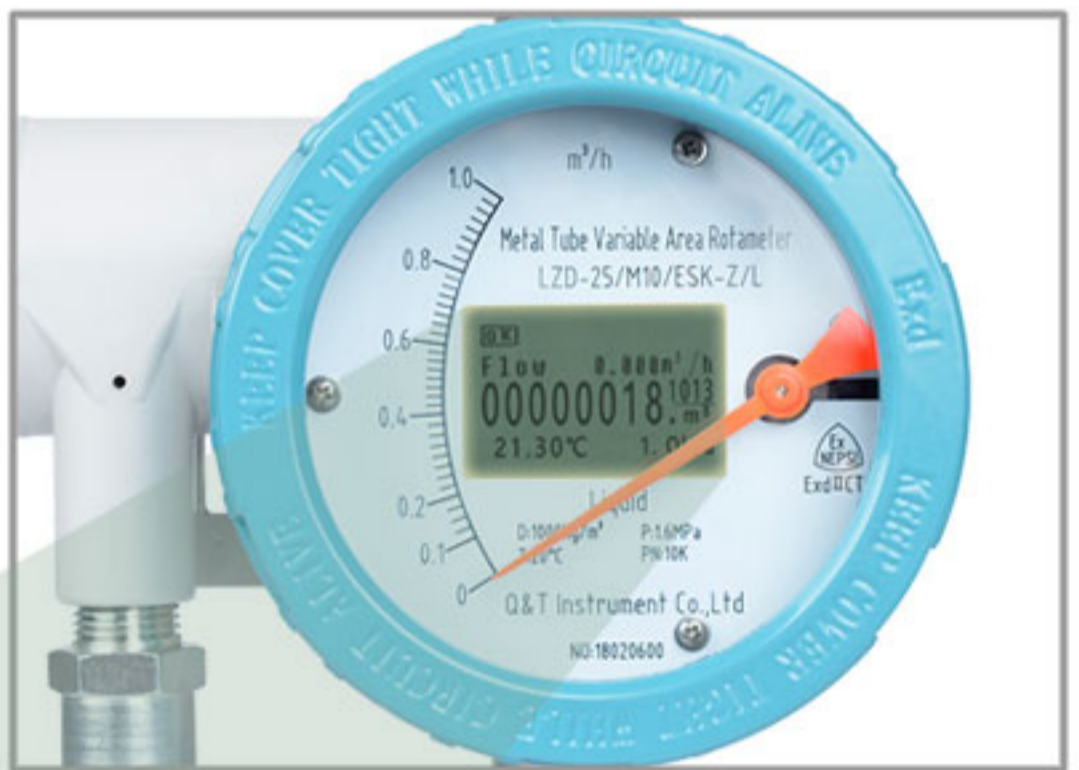


Local indicator

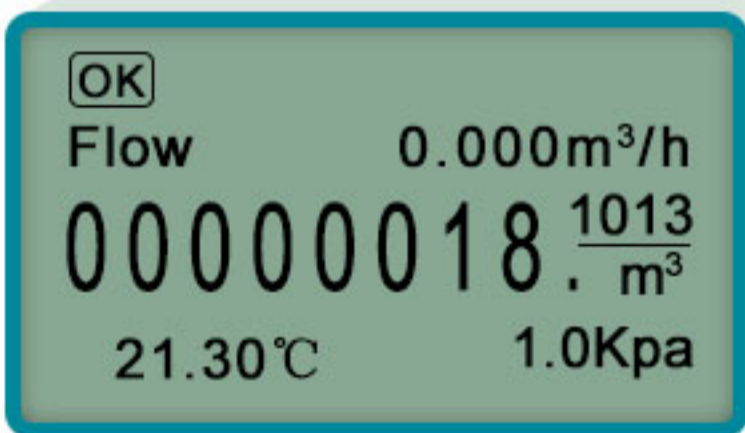
High resolution
high accuracy
High visibility
Durable use

Muti-line LCD display

Pointer indication+
LCD display
High visibility
4~20mA output



Display flow rate(m³/h)
Totalizer(m³)
Medium temperature(°C)
Pressure(Kpa)



► **Float**



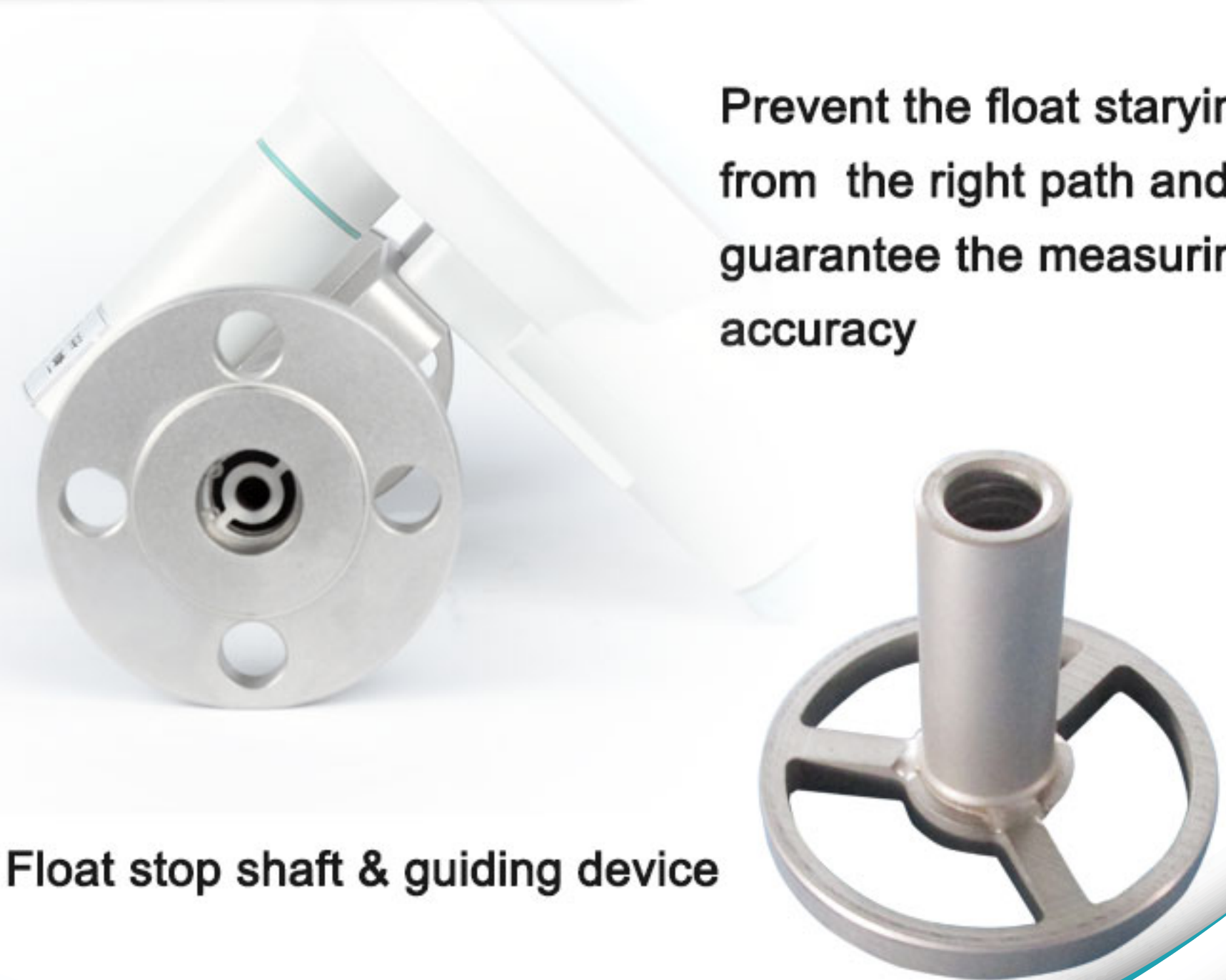
Embedded stainless steel float



Optional materials:
Stainless steel (304 or 316), Titanium,
Hastelloy, PTFE, FEP, etc.

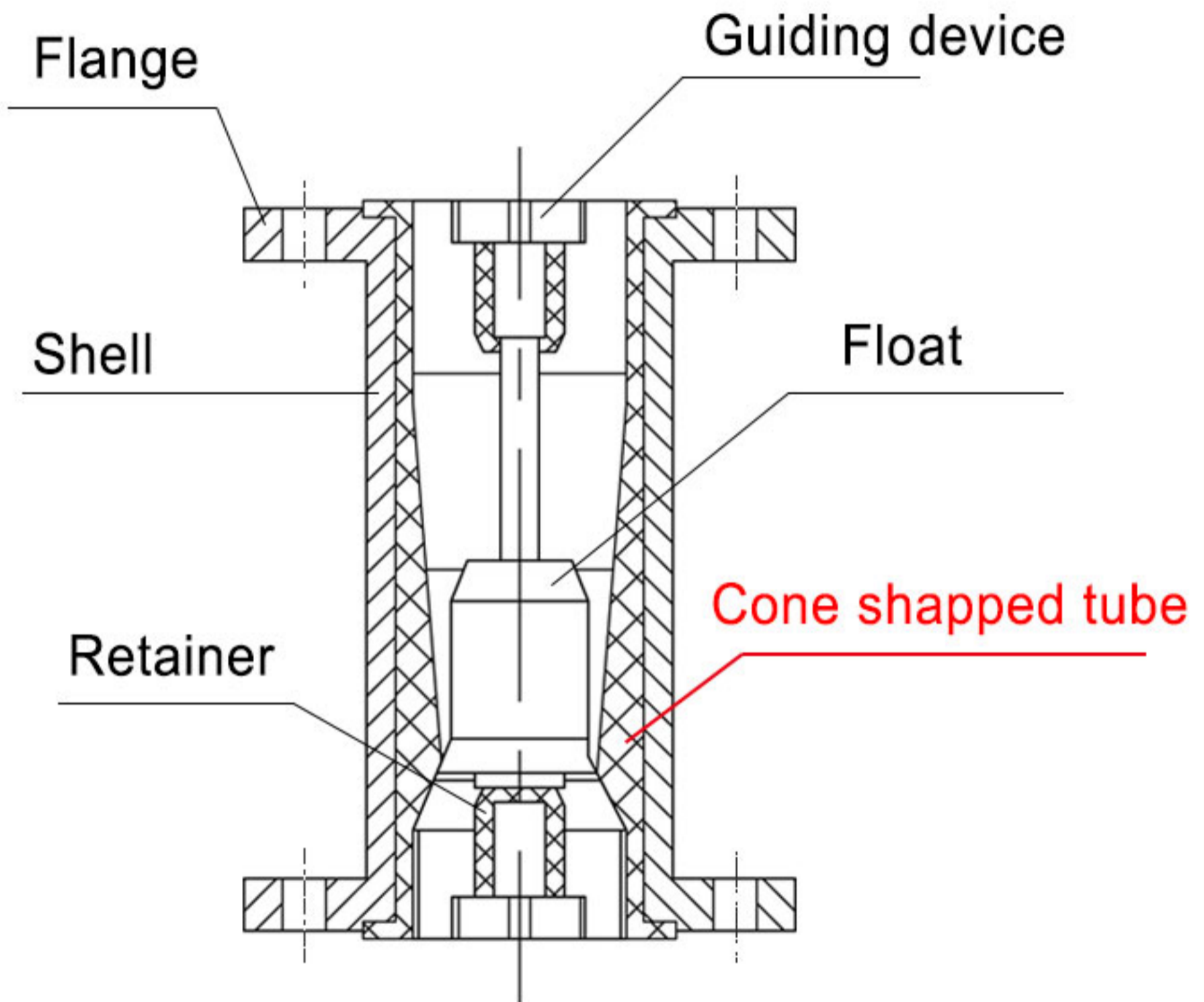
Float Stop Shaft ◀

Prevent the float starying
from the right path and
guarantee the measuring
accuracy



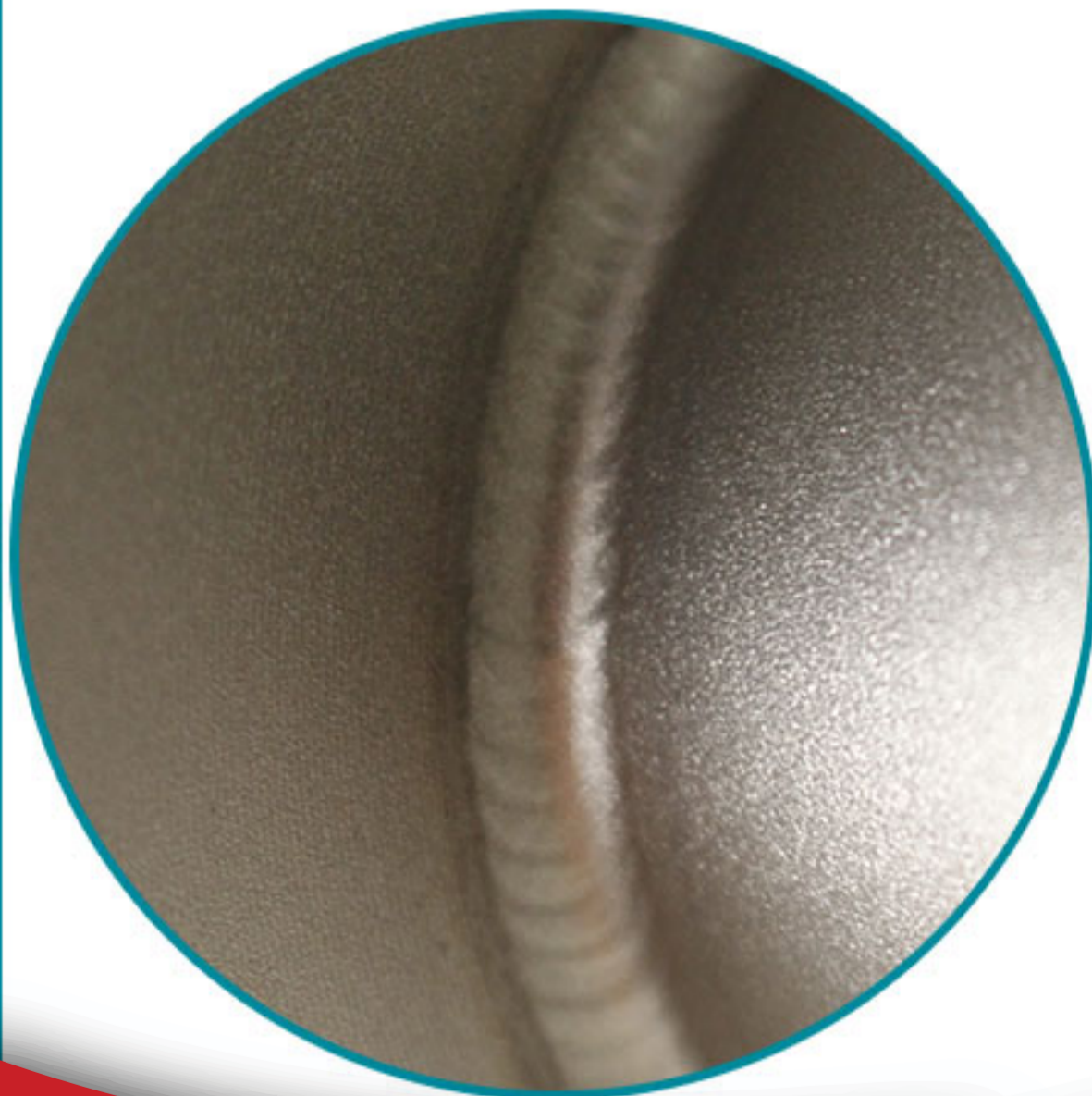
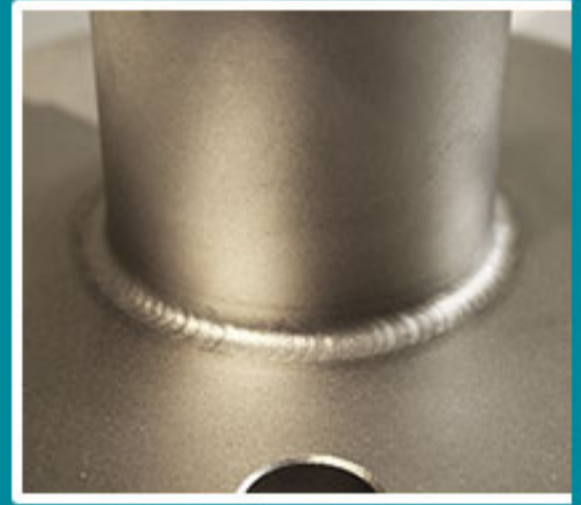
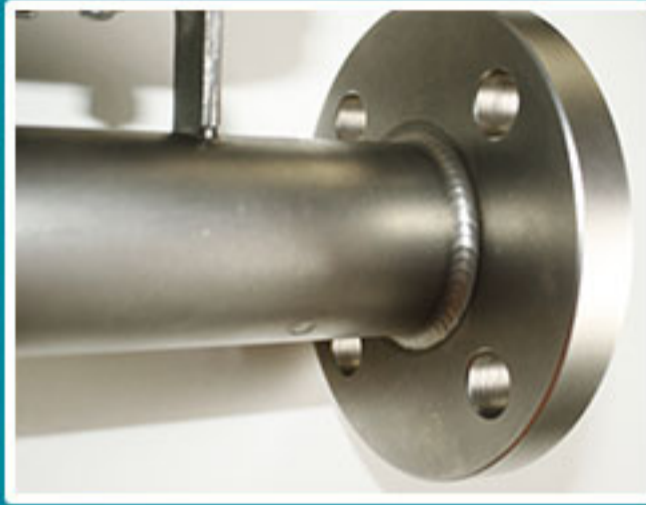
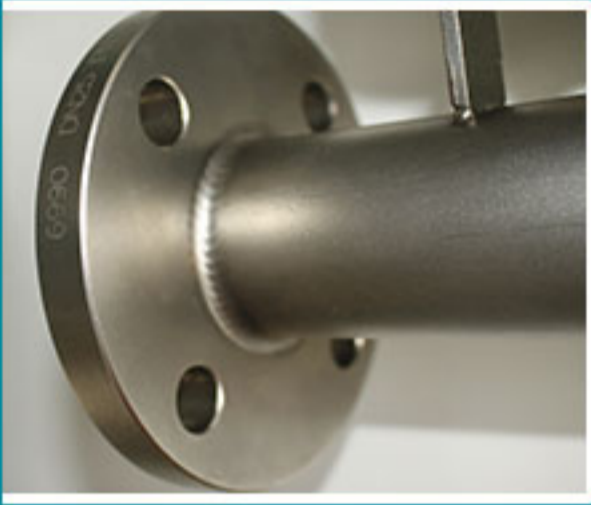
Float stop shaft & guiding device

▶ Cone tube design



Metal tube rotameter adopts the cone-shape design, reducing flow area, reducing error, making the measurement more accurate !

Welding procedure



Uniform welding

Full weld

Reliable

Elegant

▶ various output options

output options:

DC 4~20mA

DC 4~20mA + HART

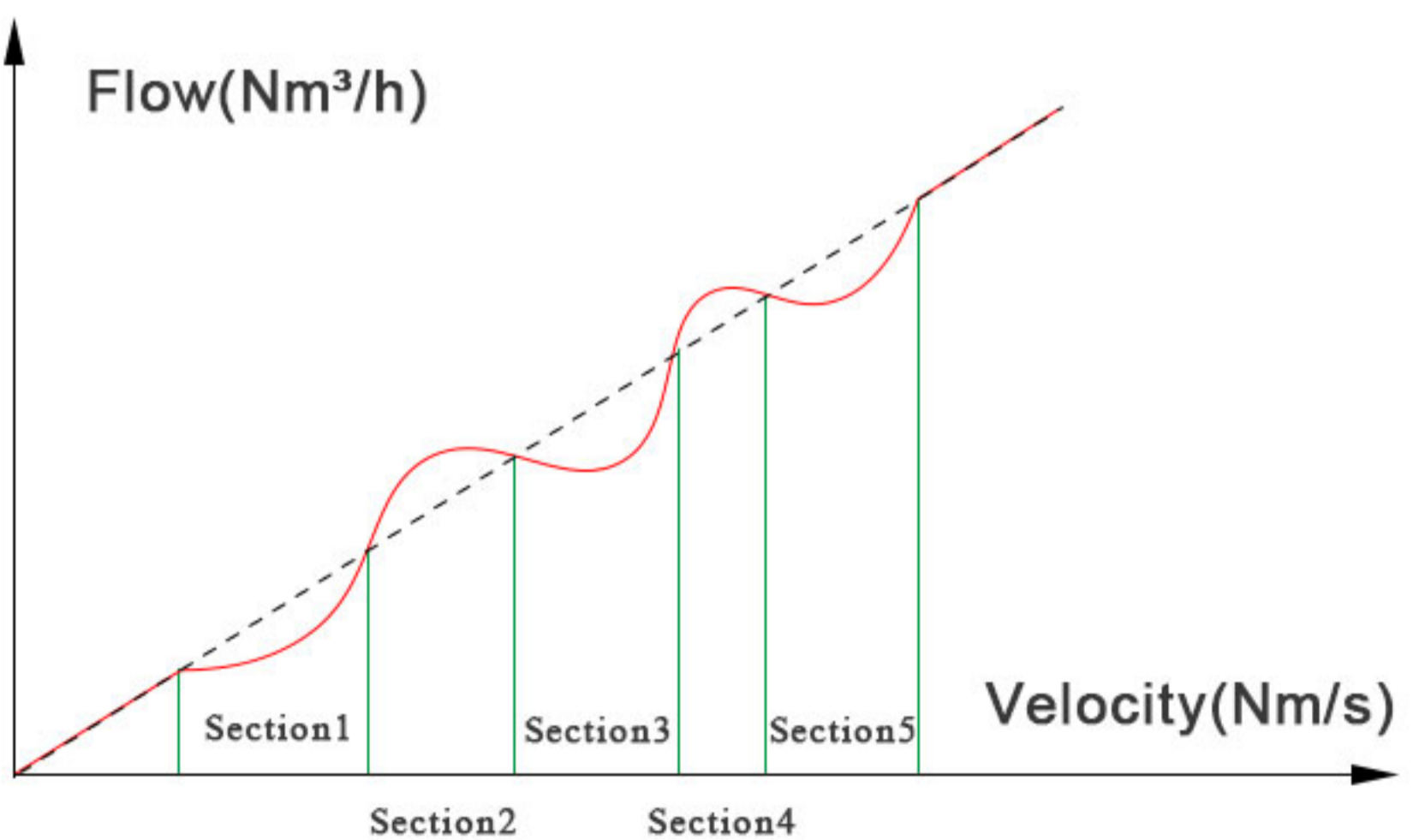
DC 4~20mA + RS485

DC 4~20mA + Alarm

DC 4~20mA + Pulse

Note: Default DC 4~20mA output

Segment Correction ◀



Metal Tube Rotameter's measuring range can be divided into 12 customizable sections for further correction, this feature allows us to optimize instrument accuracy.

Metal Tube Rotameter Technical Parameter

Measuring range	Water (20°C) 16~150000 l/h. Air(0.1013MPa 20°C) 0.5~4000 m ³ /h.
Range ratio	10:1(Special type 20:1).
Accuracy class	2.5(Special type 1.5% or 1.0%).
Working pressure	DN15~DN50 PN16MPa (Special type 25MPa). DN80~DN150 PN10MPa (Special type 16MPa). Pressure rating of jacket 1.6MPa.
Medium temperature	Normalized type -80°C~+220°C. High-temperature type 300°C. Lined with FEP type ≤85°C.
Ambient temperature	-40°C~+120°C(Remote display without LCD≤85°C). (Remote display with LCD≤70°C).
Dielectric viscosity	1/4" NPT, 3/8" NPT 1/2" NPT≤5mPa.s 3/4" NPT,1" NPT ≤250mPa.s
Output	Standard signal: two-wire system 4 ~ 20mA (with HART communication). Standard signal: three-wire system 0 ~ 10mA. Alarm signal:1.Two-way relay output. 2.One-way or two-approach switches . Pulse signal output: 0-1KHz isolated output.
Process connection	Standard type:24VDC±20%. AC type:220VAC(85~265VAC) (optional).
Connection mode	Flange Thread Tri-clamp
Levels of protection	IP65/IP67.
Ex-mark	Intrinsically safe:ExiaIICT3~6. Exd type:ExdIICT4~6.

Metal Tube Rotameter Model Selection

PHLZ	X	X	X	X	X	X	X	X	X
Indicator	Code								
Local indicator	Z								
LCD indicator with ouput	D								
Norminal diameter	Code								
DN15	-15								
DN20	-20								
DN25	-25								
DN40	-40								
DN50	-50								
DN80	-80								
DN100	-100								
DN150	-150								
Structure	Code								
Bottom-top	/								
Left-right (horizontal)	H1								
Right-left (horizontal)	H2								
Side-side	AA								
Bottom -side	LA								
Thread connection	S								
Tri-clamp	M								
Body material	Code								
304SS	R4								
316LSS	R6L								
Hastelloy C	Hc4								
Titanium	Ti								
Liner F46(PTFE)	F								
Monel	M								
Indicator type	Code								
Iinear indicator(pointer indication)	M7								
Nonlinear indicator(LCD Display)	M9								
Combination function(only for LCD display)	Code								
24VDC with 4~20mA output	S								
24VDC with HART communication	Z								
Battery power	D								
Additional function	Code								
Measuring tube with thermal preservation / heat insulation jacket	T								
Measure medium temperature higher than 120°C	HT								
Ex-proof:	Code								
With	W								
Without	N								
Alarm	Code								
One alarm	K1								
Two alarm	K2								
None	N								

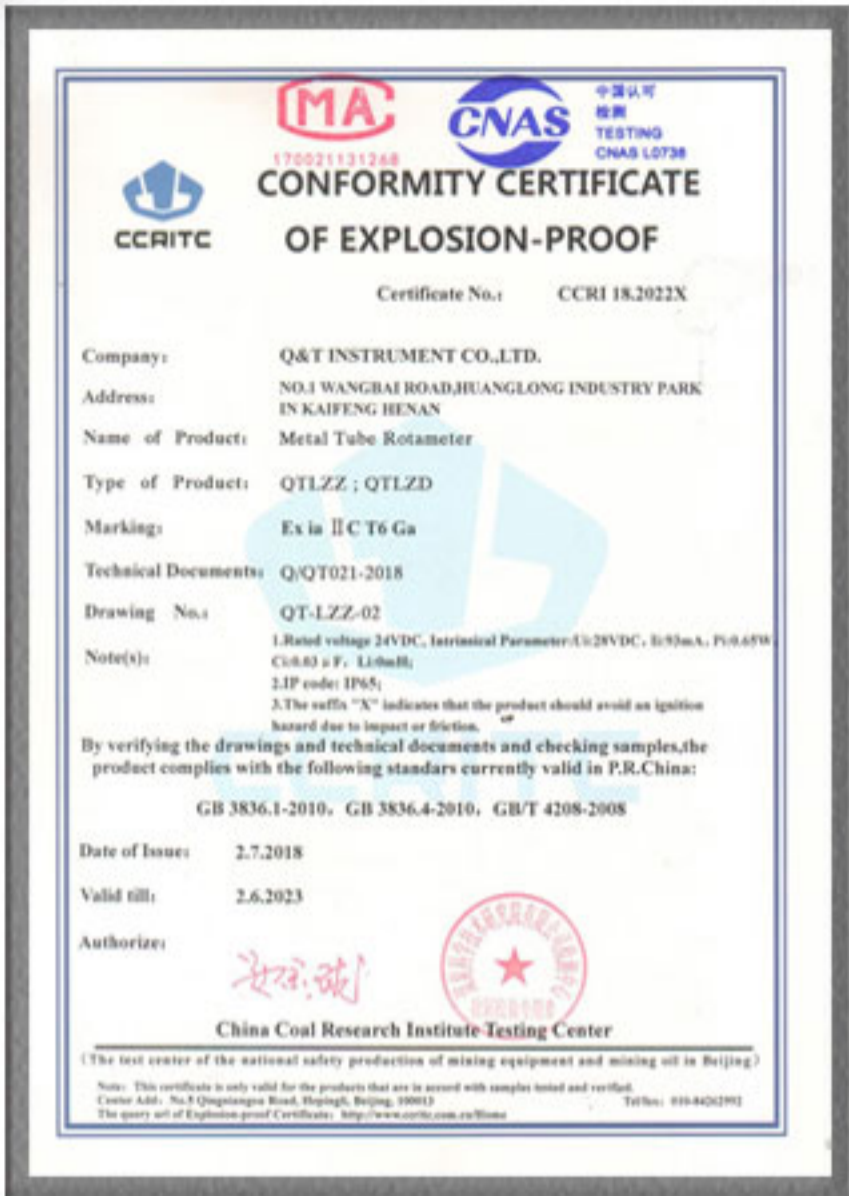
Metal Tube Rotameter Flow Range

Float material: 1□: 0Cr18Ni9 00Cr17Ni14Mo2 Hastelloy 2□: FEP

Diameter DN	Water (20°C) L/h		Air 0.1013MPa 20°C Nm ³ /h	Standard type The maximum pressure loss KPa	
	1□	2□	1□	Water	Air
15	* 16	-	0.5	2.0	7.0
	* 25	16	0.7	2.3	7.2
	40	25	1.1	2.5	7.3
	63	40	1.8	2.5	7.5
	100	63	2.8	2.5	7.8
	160	100	4.8	2.6	8.0
	250	160	7.0	2.7	10.0
	400	250	10.0	2.9	10.8
	600	400	16.0	3.4	14
20	600	400	16	4.0	7.0
	1000	600	30	4.1	8.0
	1600	1000	45	4.4	12.0
	2500	1600	70	5.2	19.0
	4000	2500	110	7.0	25.0
	6000	4000	180	12.5	33.0
25	600	400	16	4.0	7.0
	1000	600	30	4.1	8.0
	1600	1000	45	4.4	12.0
	2500	1600	70	5.2	19.0
	4000	2500	110	7.0	25.0
	6000	4000	180	12.5	33.0
32	1000	600	30	4.1	8.0
	1600	1000	45	4.4	12.0
	2500	1600	70	5.2	19.0
	4000	2500	110	7.0	25.0
	6000	4000	180	12.5	33.0
	10000		250	12.5	33.0
40	2500	1600	70	5.2	19.0
	4000	2500	110	7.0	25.0
	6000	4000	180	12.5	33.0
	10000		250	12.5	33.0
50	6000	4000	180	4.7	8.0
	10000	6000	250	5.1	15.0
	16000	10000	400	6.2	22.0
	25000	16000	600	8.0	35.0
65	16000	10000	400	6.2	22.0
	25000	16000	600	8.0	35.0
80	25000	16000	1000	5.3	15.0
	40000	25000	1200	7.8	22.0
	60000	40000	1600	8.3	25.0
100	60000	40000	1800	11.4	35.0
	100000	60000	3000	16.7	45.0
125	100000	40000	3000	11.4	42.0
	125000	50000	3000	11.4	47.0
150	150000	100000	4000	17.0	47.0

Notes: In addition to the above general specifications, * Special specifications all can be customized according to customer demand.

Certificates



Metal tube rotameter explosion proof



Metal tube rotameter CE



Enterprise Certificates



More than 100 patents

Packaging Of Products



Products ready for packing



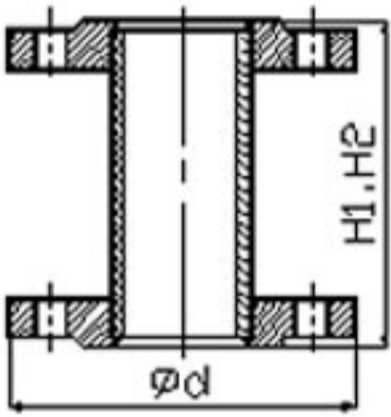
ECO Packing



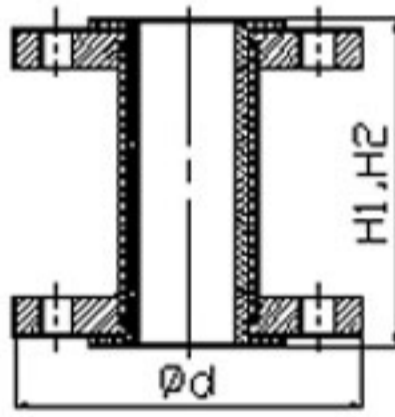
Enter the finished product warehouse and wait for transportation

Products are multi-packaging, shockproof and anti-fall, ensure the safe delivery

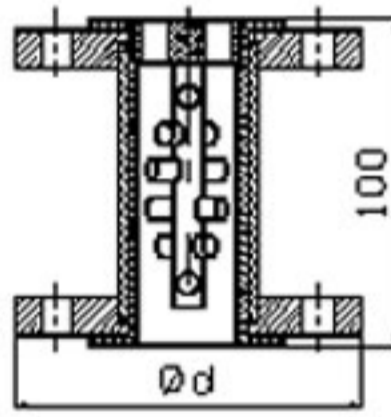
Metal Tube Rotameter Installation Condition



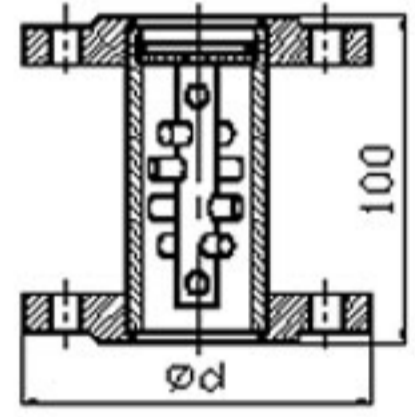
Straight pipe section



Straight pipe section lined with FEP



Filter lined with FEP



Filter

Caliber	DN15	DN25	DN50	DN80	DN100	DN150
Front straight pipe section H1≥ (mm)	75	125	250	400	500	750
Back straight pipe section H2≥ (mm)	250	250	250	250	250	250
Ød (mm)	95	115	165	200	220	285

Note: straight pipe section and magnetic filter are connected with DIN PN16 flange, special standard is specified by user.



*Rich experiences
in exhibition*



*Trade
Show*



More about us:

Welcome to visit our company.